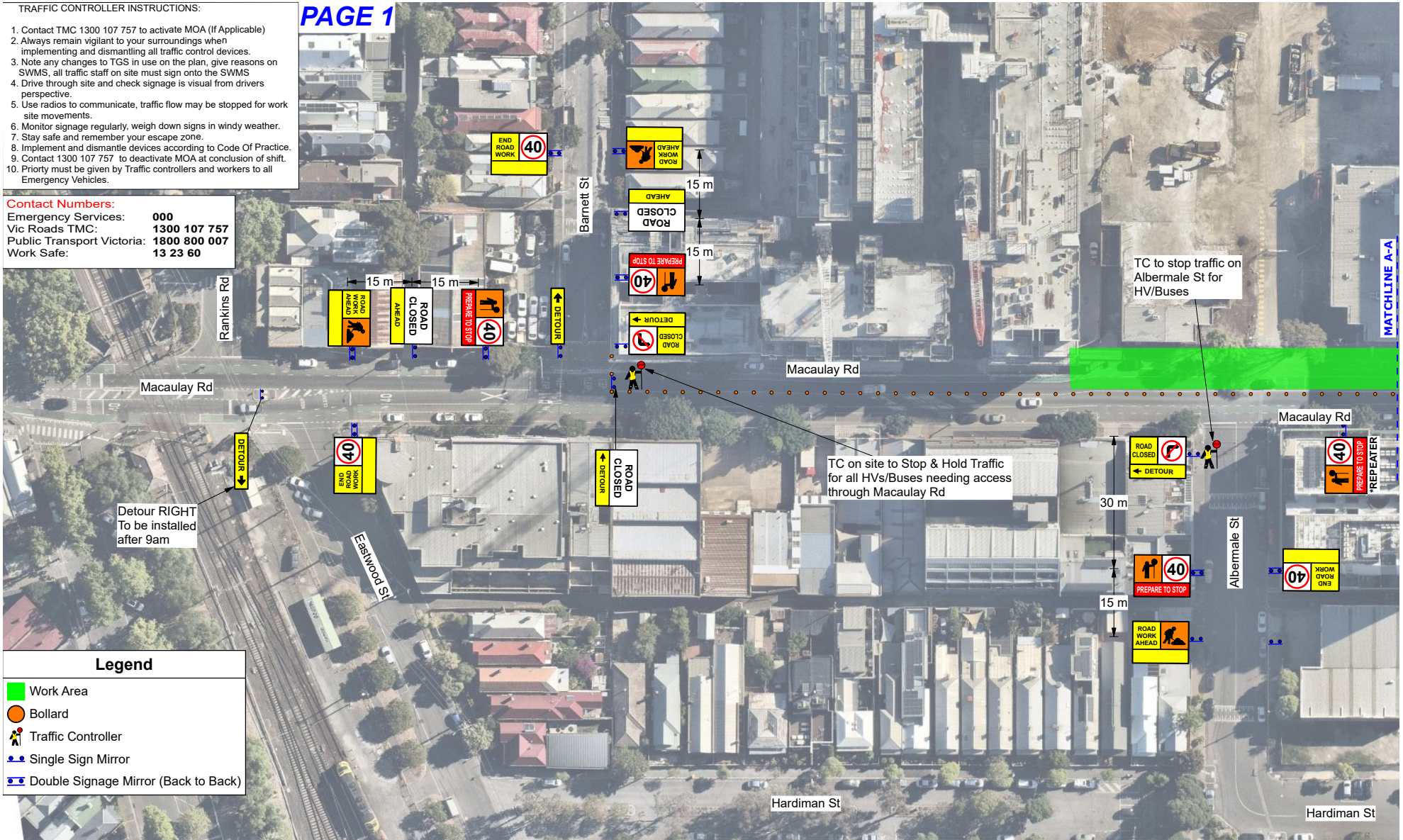


- TRAFFIC CONTROLLER INSTRUCTIONS:
1. Contact TMC 1300 107 757 to activate MOA (If Applicable)
  2. Always remain vigilant to your surroundings when implementing and dismantling all traffic control devices.
  3. Note any changes to TGS in use on the plan, give reasons on SWMS, all traffic staff on site must sign onto the SWMS
  4. Drive through site and check signage is visible from drivers perspective.
  5. Use radios to communicate, traffic flow may be stopped for work site movements.
  6. Monitor signage regularly, weigh down signs in windy weather.
  7. Stay safe and remember your escape zone.
  8. Implement and dismantle devices according to Code Of Practice.
  9. Contact 1300 107 757 to deactivate MOA at conclusion of shift.
  10. Priority must be given by Traffic controllers and workers to all Emergency Vehicles.

PAGE 1

**Contact Numbers:**  
Emergency Services: **000**  
Vic Roads TMC: **1300 107 757**  
Public Transport Victoria: **1800 800 007**  
Work Safe: **13 23 60**



Legend	
	Work Area
	Bollard
	Traffic Controller
	Single Sign Mirror
	Double Signage Mirror (Back to Back)

	Date: 19/03/2025		Plan Number #:	Rev:	Date:	Description:	Drawn:		Emergency Contacts:	Disclaimer:
	Location: 402-444 Macaulay Rd, Kensington		Metro Civil - 402-444 Macaulay Rd, Kensington (Drainage Works) - TGS 29000 v1.5	1.0	19/03/25	Initial Design	A.K			
	Municipality: Melbourne City Council	Recommended print size: A3 LANDSCAPE	Type of Works: Drainage Works	1.1	05/05/25	Detour routes update	A.K			
	Melways Ref: 43 A3	MOA Req N/A	Client:	1.2	12/06/25	Extend work area/Additional TC	A.K			
	Author: Andrew Kyriakou Author ID : 68308	Author: Andrew Kyriakou Author ID : 68308		1.3	24/07/25	Adjusted TGS per comments	D.B			
				1.4	28/07/25	TC Added & Detour Updated	D.B			
				1.5	30/07/25	VMS Board Added	D.B		EMERGENCY - 000 or 112 VIC ROADS TMC - 13 11 70 METRO - 9619 1111 PTV - 1800 800 007 YARRA TRAMS - 9610 3376	This Traffic Management Plan (TMP) is not to scale. Signs and positions illustrated on TMP are to be used as a guide only, and may need to be adjusted based on conditions of work day by a qualified traffic controller ONLY. (Barleys Traffic Management) will accept not responsibilities for compliance if or when the TMP drafted under agreement for our client(s) are to be implemented others in lieu of (BTM). Work site to be fully compliant with Australia Standards 1742.3 - 2019 & The Road Management Act 2004 & AGTTM Parts 1-10



# TRAFFIC CONTROLLER INSTRUCTIONS:

1. Contact TMC 1300 107 757 to activate MOA (If Applicable)
2. Always remain vigilant to your surroundings when implementing and dismantling all traffic control devices.
3. Note any changes to TGS in use on the plan, give reasons on SWMS, all traffic staff on site must sign onto the SWMS perspective.
4. Drive through site and check signage is visible from drivers perspective.
5. Use radios to communicate, traffic flow may be stopped for work site movements.
6. Monitor signage regularly, weigh down signs in windy weather.
7. Stay safe and remember your escape zone.
8. Implement and dismantle devices according to Code Of Practice.
9. Contact 1300 107 757 to deactivate MOA at conclusion of shift.
10. Priority must be given by Traffic controllers and workers to all Emergency Vehicles.

**Contact Numbers:**  
 Emergency Services: **000**  
 Vic Roads TMC: **1300 107 757**  
 Public Transport Victoria: **1800 800 007**  
 Work Safe: **13 23 60**

**PAGE 2**

## Legend

- Work Area
- Bollard
- Traffic Controller
- Single Sign Mirror
- Double Signage Mirror (Back to Back)

MATCHLINE A-A

TC to assist stopping traffic and controlling pedestrians

Stubbs St

TC to stop traffic on Stubbs St for HV/Buses

TC on site to Stop & Hold Traffic for all HVs/Buses needing access through Macaulay Rd

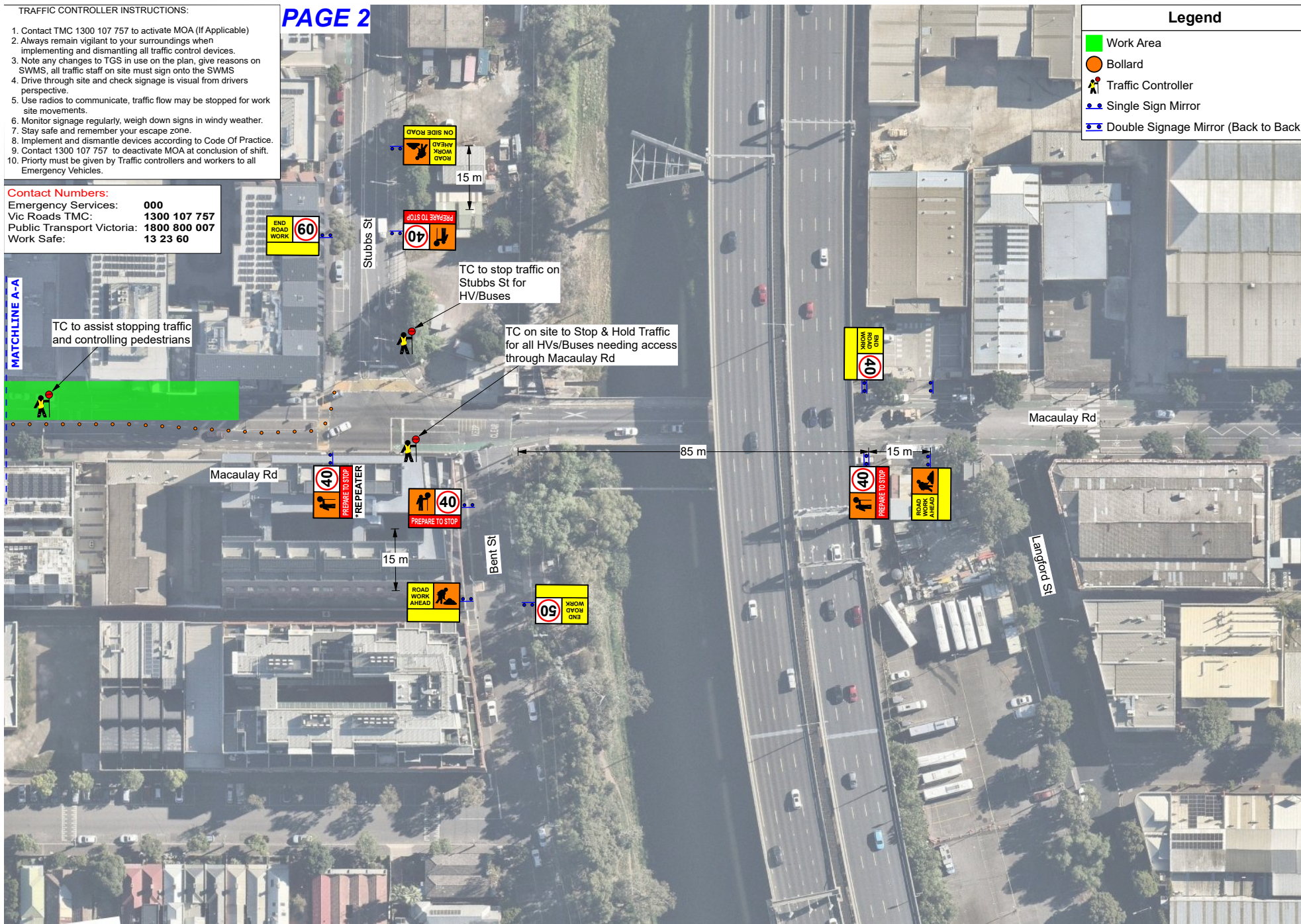
Macaulay Rd

85 m

Macaulay Rd

Bent St

Langford St





# TRAFFIC CONTROLLER INSTRUCTIONS:



1. Contact TMC 1300 107 757 to activate MOA (If Applicable)
2. Always remain vigilant to your surroundings when implementing and dismantling all traffic control devices.
3. Note any changes to TGS in use on the plan, give reasons on SWMS, all traffic staff on site must sign onto the SWMS
4. Drive through site and check signage is visible from drivers perspective.
5. Use radios to communicate, traffic flow may be stopped for work site movements.
6. Monitor signage regularly, weigh down signs in windy weather.
7. Stay safe and remember your escape zone.
8. Implement and dismantle devices according to Code Of Practice.
9. Contact 1300 107 757 to deactivate MOA at conclusion of shift.
10. Priority must be given by Traffic controllers and workers to all Emergency Vehicles.

## Contact Numbers:

Emergency Services: **000**  
Vic Roads TMC: **1300 107 757**  
Public Transport Victoria: **1800 800 007**  
Work Safe: **13 23 60**

# LOCAL TRAFFIC DETOUR ROUTE & SIGNAGES

## Legend

-  Detour Route
-  Work Area

